

Electrothermoplasmonic Flow in Gold Nanoparticle Suspensions

Strong flow field generation in lab-on-a-chip microchannels combining AC electric fields with thermo-plasmonic heating.

E. Ruiz Reina¹, C. D. González-Gómez^{1,2}, R. A. Rica²

1. Department of Applied Physics II, Universidad de Málaga, Málaga, Spain

2. Department of Applied Physics, Universidad de Granada, Granada, Spain

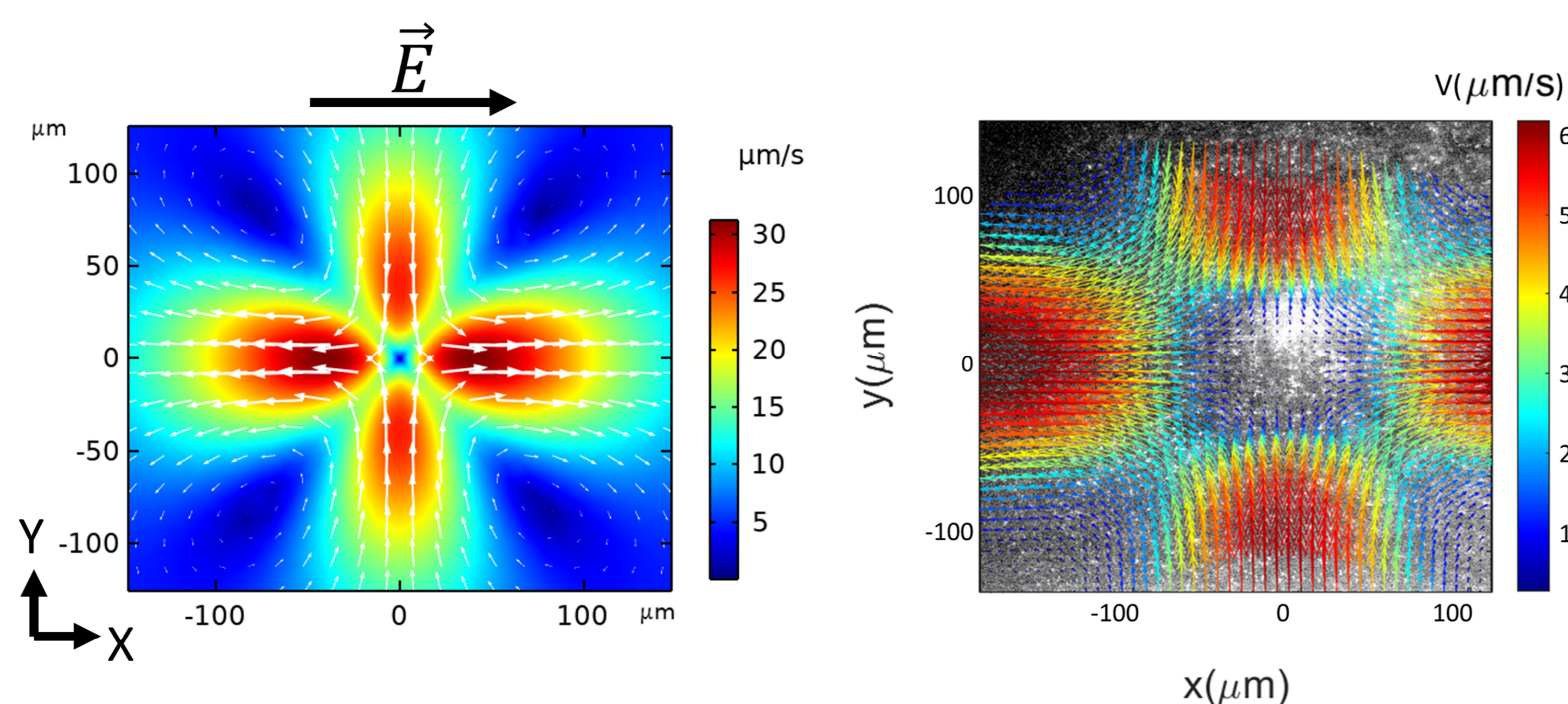
Abstract

Efficient mixing and pumping of liquids at the microscale is a technology that is still to be optimized. The combination of an AC electric field with a small temperature gradient leads to a strong electrothermal flow that can be used for multiple purposes.

Combining simulations and experiments, an analysis of the performance of electrothermal flow is provided when the

temperature gradient is generated by illuminating plasmonic nanoparticles in suspension with a near-resonance laser.

COMSOL Multiphysics® simulations provide a description of the phenomenon that is compatible with experiments and constitute a way to understand and estimate the flow velocities and the absorption and scattering cross-sections of both dispersed particles and/or aggregates.



Comparison between simulated (left) and experimental (right) flow fields.

Methodology

Fluid flow is measured by tracking the velocity of fluorescent tracer microparticles in suspension as a function of the electric field, laser power, and concentration of plasmonic particles.

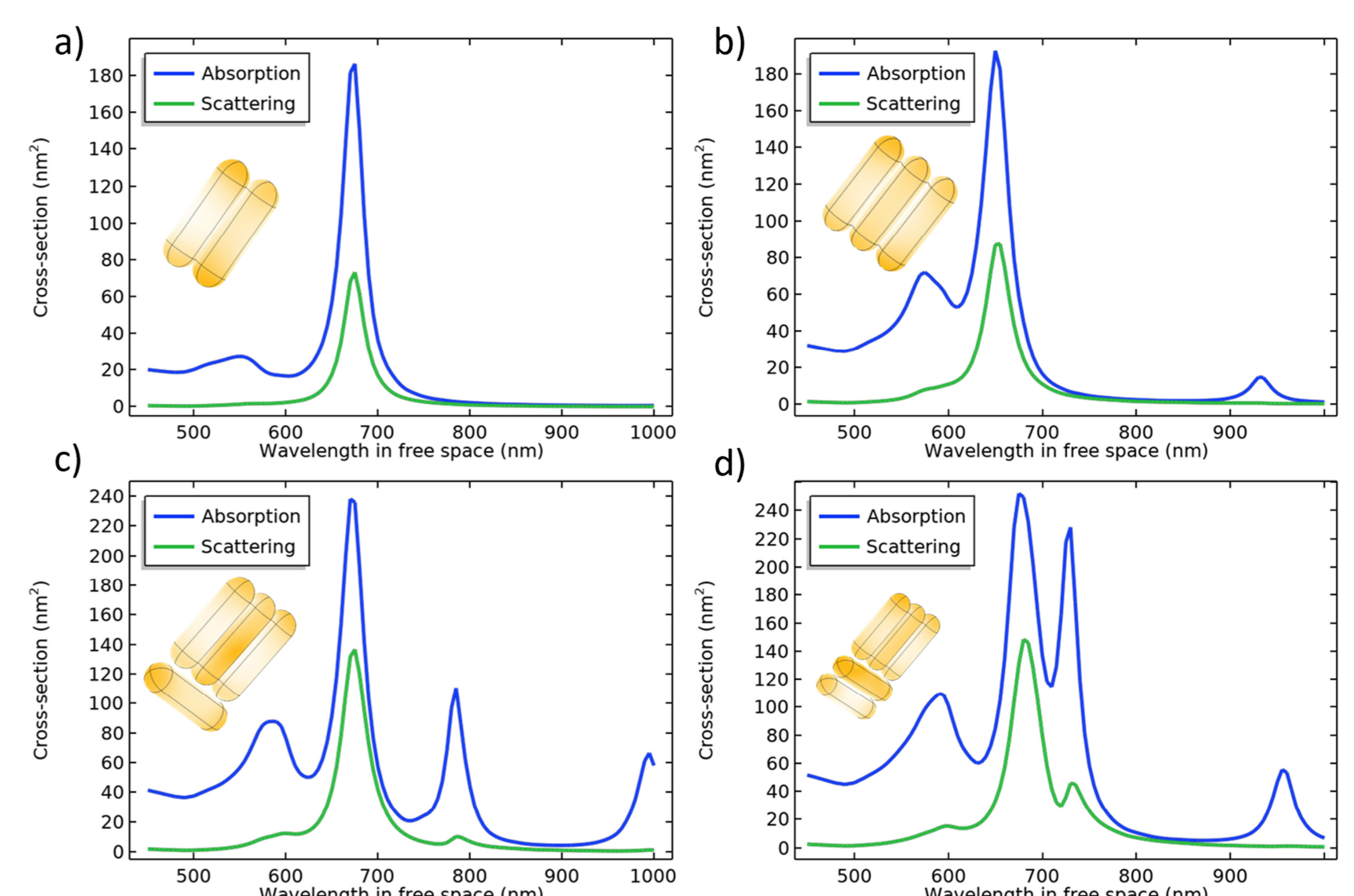
COMSOL Multiphysics® is used to perform a multiphysics simulation that combines Heat Transfer in Fluids, Laminar Flow and an applied electric field. Separated EMW simulations were performed to estimate absorption and scattering cross-sections of both dispersed particles and aggregates.

The model is calculated with a Stationary solver, tailored for different electric field, particle concentrations and laser power conditions.

Results

Among other results, a non-linear relationship is found between the maximum velocity of the fluid and particle concentration, which is justified in terms of multiple scattering-absorption events, involving aggregates of nanoparticles, that lead to enhanced absorption when the concentration is raised.

A comparison of experiments and simulations suggests that there is some aggregation of the gold nanoparticles by forming clusters of about 2-7 particles, but no information about their structure can be obtained without further theoretical and experimental developments. This nonlinear behavior could be useful to get very high ETP velocities by inducing some controlled aggregation of the particles.



Scattering and absorption cross-section of clusters of 2, 3, 4 and 5 particles.

REFERENCES

C. D. González-Gómez, R. A. Rica, and Emilio Ruiz-Reina. Electrothermoplasmonic Flow in Gold Nanoparticles Suspensions: Nonlinear Dependence of Flow Velocity on Aggregate Concentration. *Journal of Colloid and Interface Science* (2023), Vol. 648 Pp.: 397-405. Doi: <https://doi.org/10.1016/j.jcis.2023.05.198>

